

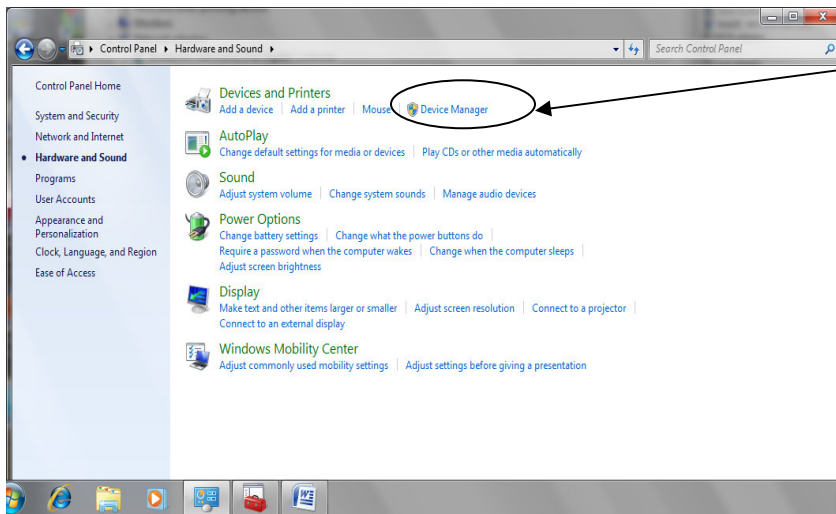
WaveNode WN-2(d) USB Driver Installation Instructions for Vista and OS 7.

Rev.1

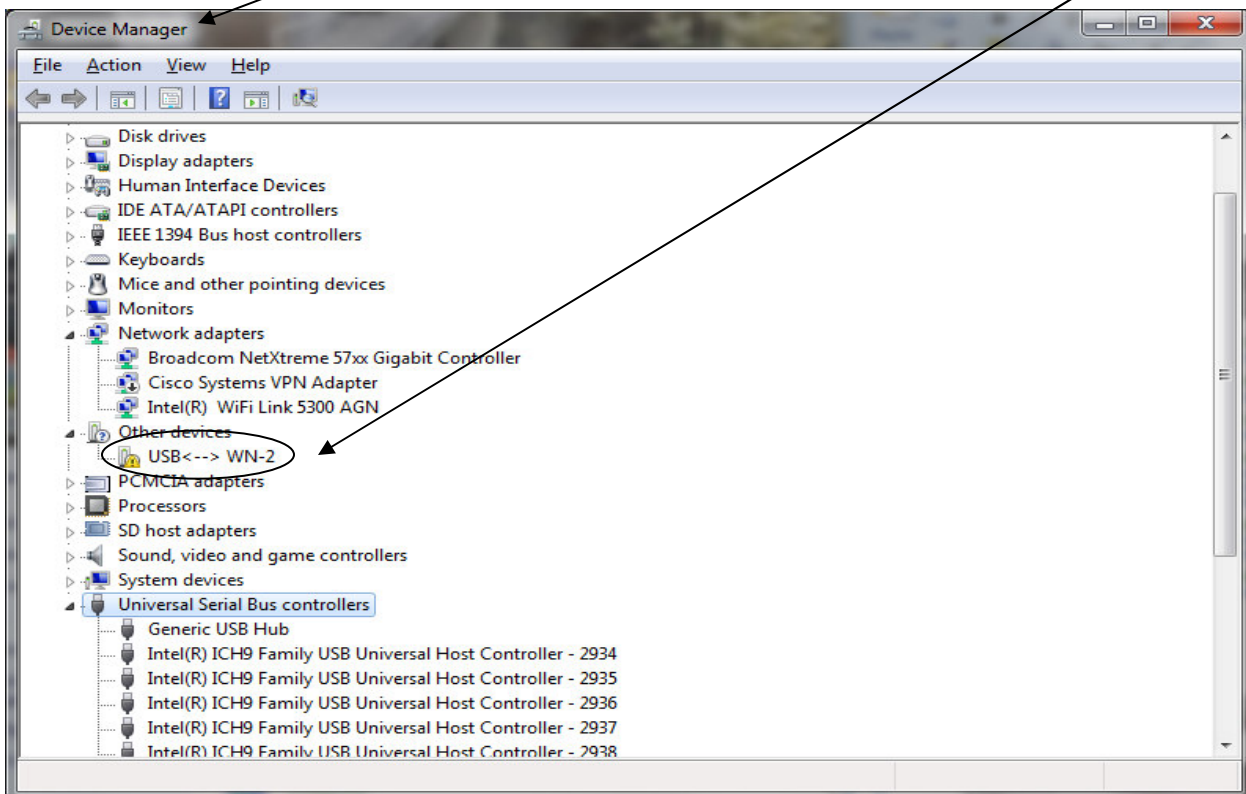
These Instructions are for installation of the WN-2(d) USB driver on Windows PC with Vista and OS7 operating systems, either 32 or 64 bit.

Turn on your WN-2(d) with the USB cable connected and CDROM in the CD player.

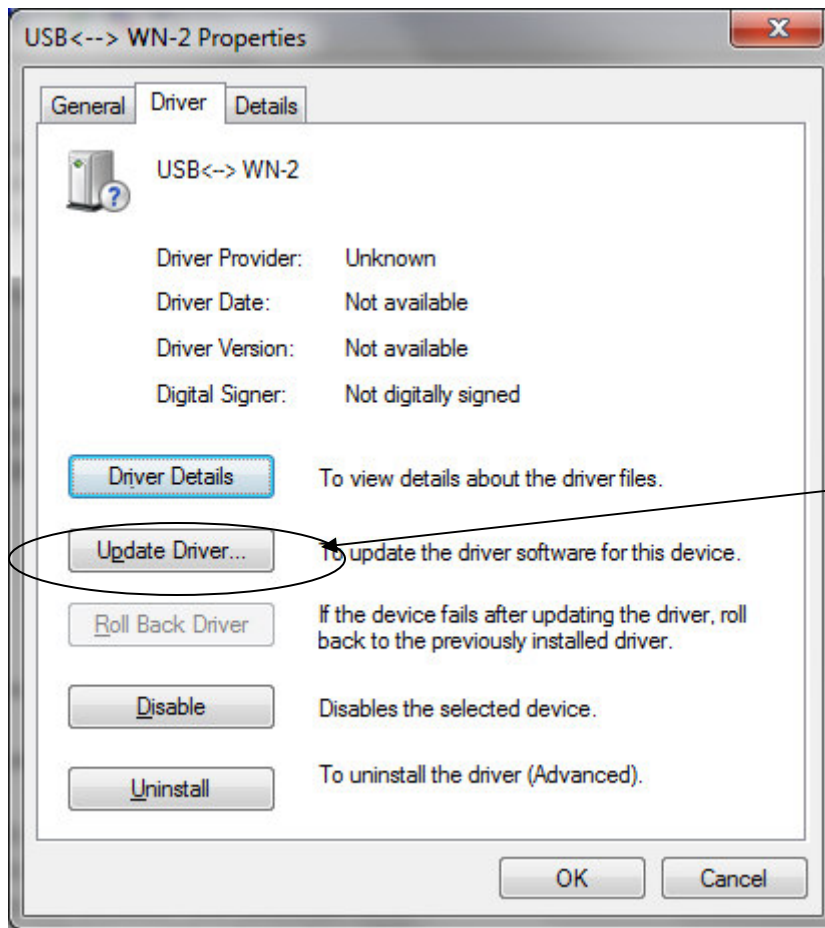
1. Go to the Control Panel->Hardware and Sound->Device Manager as shown below:



2. The Device Manager will show the WN2<--> USB connection as shown below. Notice the Yellow ? or ! next to the connection. This indicates the WN2(d) is found, but no USB driver has been associated with the device.



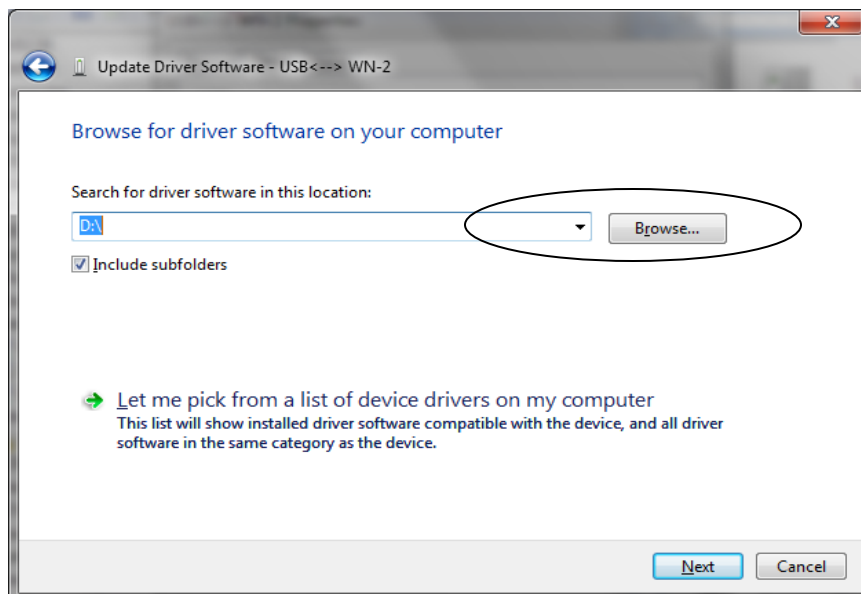
3. Right-Click on the “USB <--> WN-2” connection and the menu box below will show. Click on the “Driver” tab as shown. Now click on the “Update Driver” item in the menu:

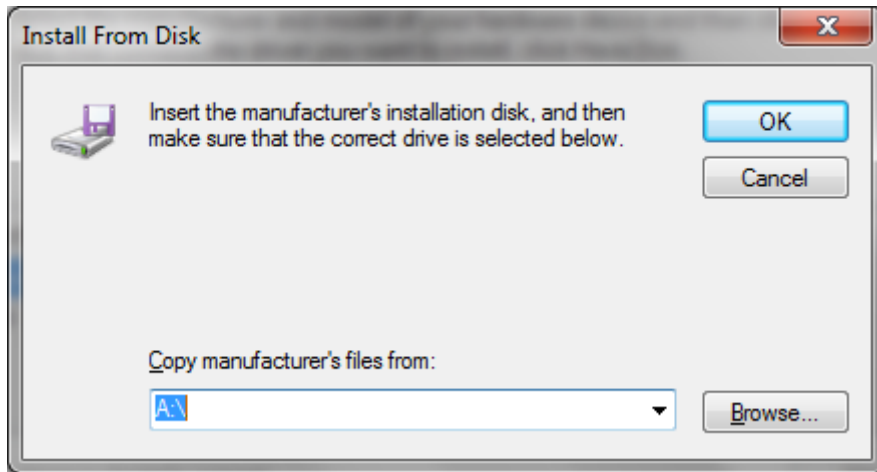


4. After clicking on “Update Driver”, the screen below will show. Use the “Browse” to to point to the folder on your WaveNode CD named:

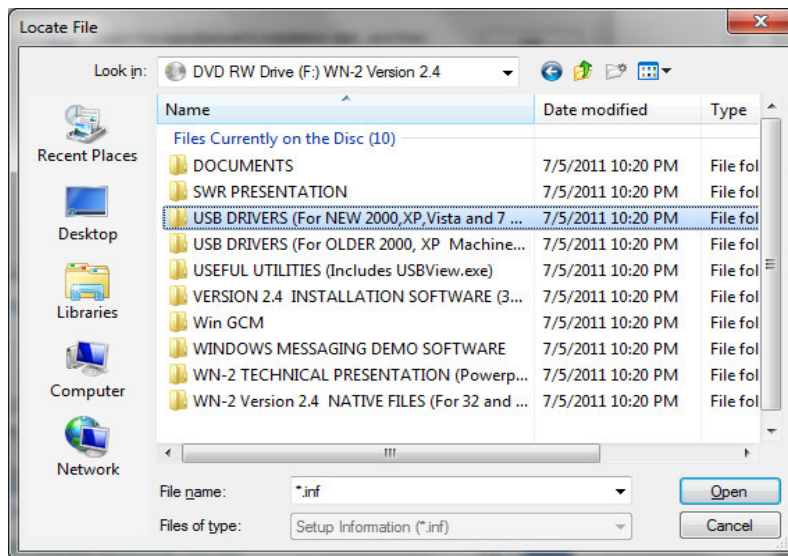
“USB DRIVERS (For NEW 2000, XP, Vista and 7 Machines)”

Click “Next” after highlighting the folder named above:

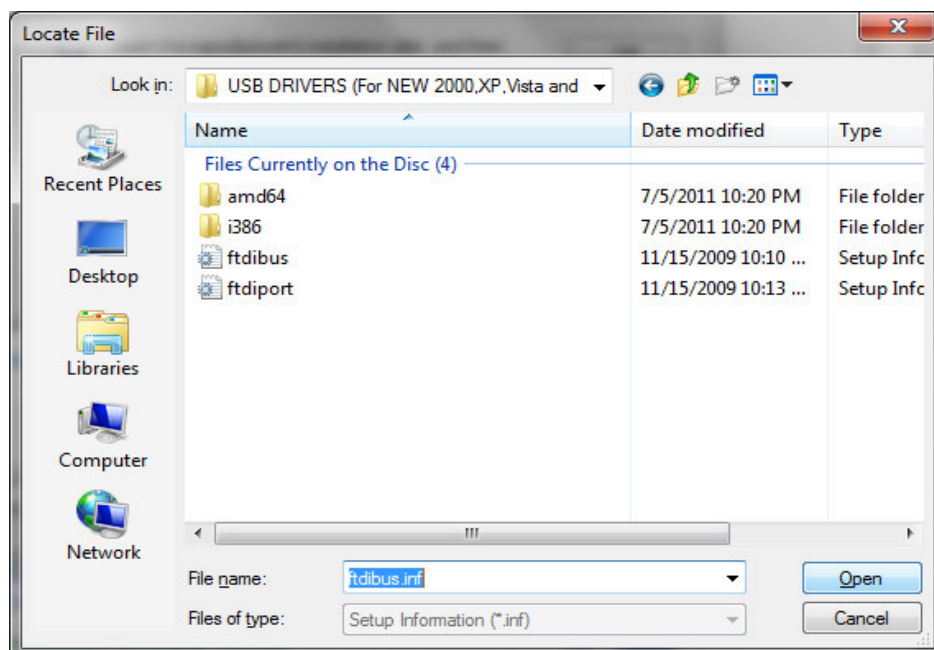




This is what the screen will look like when you “Browse” to the folder on you WaveNode CD with the USB driver:

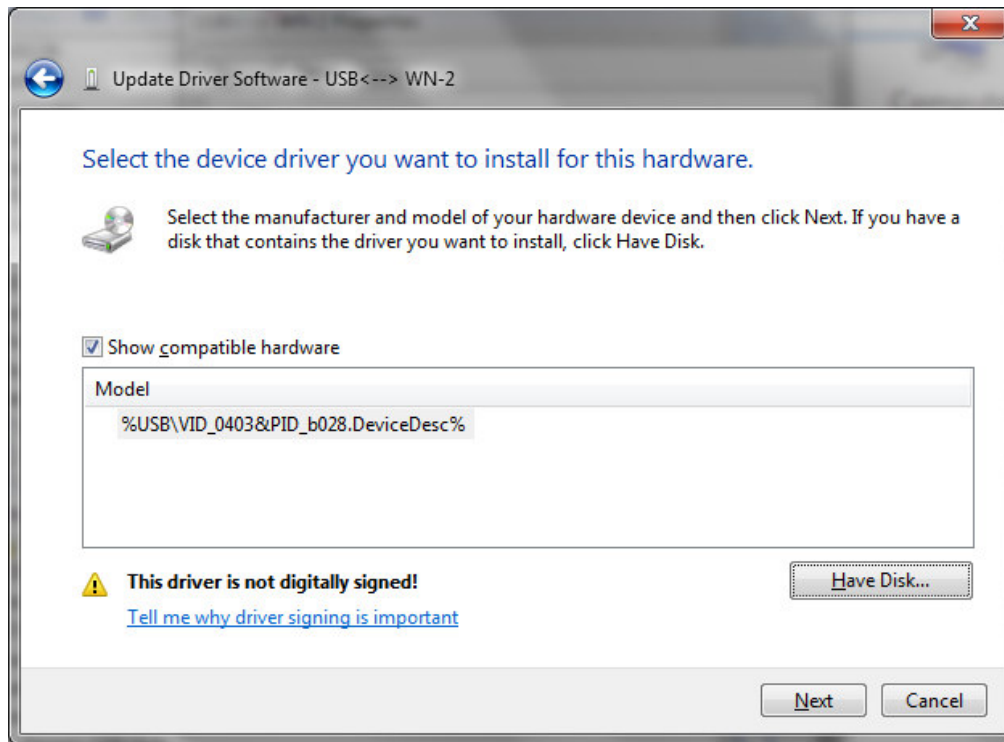


Click on “Open” button of above screen view, you will see this screen:

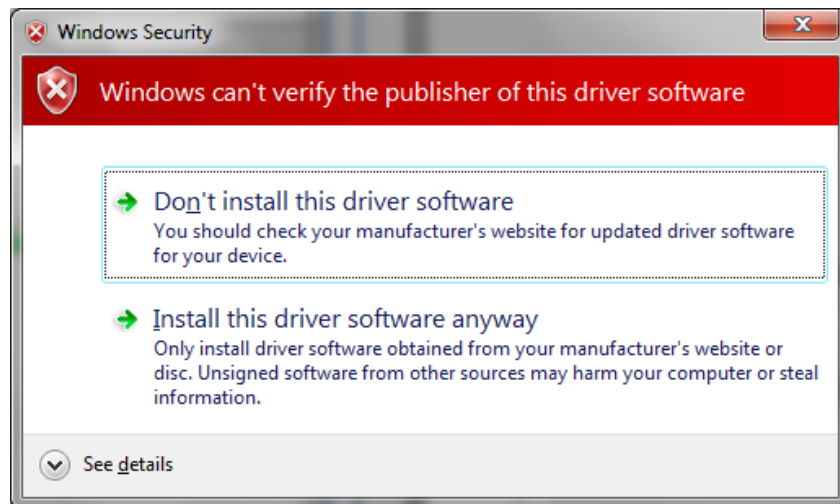


5: After clicking “Open” in screen shot above, you will see the screen below.

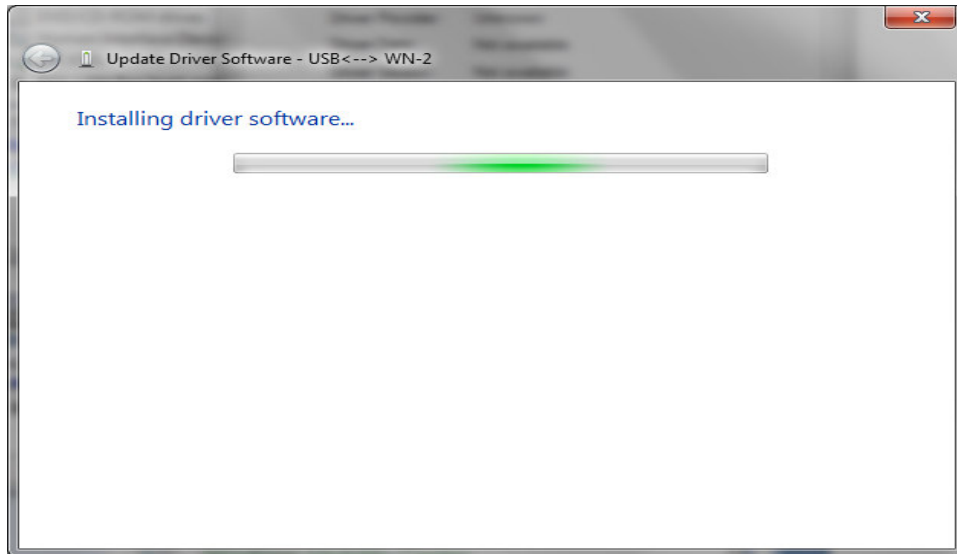
Click “Next”:



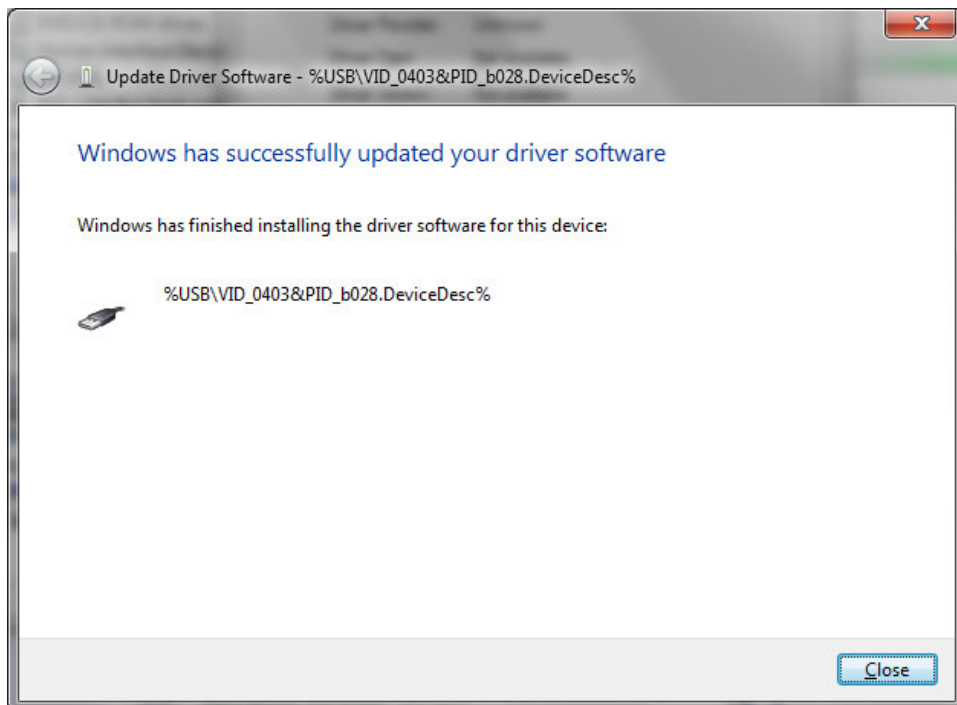
6. The window below will be shown. Click on “Install this driver software anyway”:



7. The Driver will be installed as shown below:



8: When the Driver is finished installing, you will see the screen below. You can now start your WN-2(d) software by clicking on the WN2(d) shortcut Icon on the desktop.



9.

After installing the USB driver, you can view the USB connection to your WN-2(d) in the Device Manager, notice that it is the one with VID=0403&PID=b028 device descriptor:

